

Duraline®



E1023 / 23 Series J-Type Connectors



Industrial Strength Electrical Products for Industrial Strength Users



Duraline®

Single Pole J Series
Field Attachable Connectors

Duraline has been manufacturing Single Pole J Series Cam-Type Connectors since 1946. These connectors are designed for quick and safe positive power connections. High conductivity with low resistance is assured through connectors that lock tight and stay tight! When mated, our connectors are impervious to vibration and will not twist loose from cable flexing. Connectors are available in a variety of colors to allow for easy phase identification. These connectors were designed and are built to meet and exceed all U.S. Naval specifications. All connectors and receptacles are rated 690a continuous, 1150a intermittent, and 750 volts AC/DC, have a NEMA 4 rating, and are listed to UL and CUL/CSA.

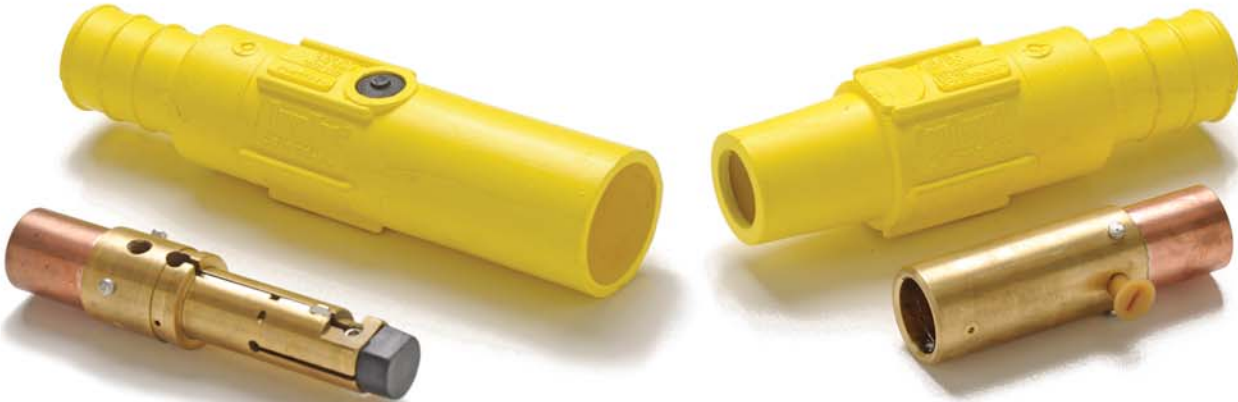
Duraline Single Pole J Series Field Attachable Connectors are quickly and easily connected and disconnected without tools, and were designed for easy field assembly. Our connectors are used in many shipyards, both military and civilian, outdoor events, fairs and carnivals, and many other locations where single pole, high voltage power is desired.



Double Set Screw		
Male	Color	Female
DE1023-106-DS1-FA	Black	DE1023-56-DS1-FA
DE1023-136-DS1-FA	Blue	DE1023-86-DS1-FA
DE1023-131-DS1-FA	Brown	DE1023-81-DS1-FA
DE1023-110-DS1-FA	Green	DE1023-60-DS1-FA
DE1023-109-DS1-FA	Orange	DE1023-59-DS1-FA
DE1023-108-DS1-FA	Red	DE1023-58-DS1-FA
DE1023-111-DS1-FA	White	DE1023-61-DS1-FA
DE1023-107-DS1-FA	Yellow	DE1023-57-DS1-FA

350 MCM Crimp Tube		
Male	Color	Female
DE1023-100-FA	Black	DE1023-50-FA
DE1023-135-FA	Blue	DE1023-85-FA
DE1023-130-FA	Brown	DE1023-80-FA
DE1023-104-FA	Green	DE1023-54-FA
DE1023-103-FA	Orange	DE1023-53-FA
DE1023-102-FA	Red	DE1023-52-FA
DE1023-105-FA	White	DE1023-55-FA
DE1023-101-FA	Yellow	DE1023-51-FA

500 MCM Crimp Tube		
Male	Color	Female
DE1023-106-FA	Black	DE1023-56-FA
DE1023-136-FA	Blue	DE1023-86-FA
DE1023-131-FA	Brown	DE1023-81-FA
DE1023-110-FA	Green	DE1023-60-FA
DE1023-109-FA	Orange	DE1023-59-FA
DE1023-108-FA	Red	DE1023-58-FA
DE1023-111-FA	White	DE1023-61-FA
DE1023-107-FA	Yellow	DE1023-57-FA



Single Pole J Series
Connectors and Caps

Duraline Single Pole J Series Connectors and Caps are designed so that, when mated, they protect the contact and sleeve. These connectors and caps serve a wide variety of fields, and are made to endure some of the harshest conditions. The sleeves and caps are made from molded solid rubber to ensure a long lasting component.



Caps		
Male	Color	Female
A244701	Black	A244629
A244725	Blue	A244636
A244733	Brown	A244635
A244729	Green	A244633
A244734	Orange	A244632
A244723	Red	A244631
A244724	White	A244634
A244735	Yellow	A244630



Mated caps not only protect contact, but also protect from electrical shock. Caps fit all 1023 products.





Male Taper Nose Connector		750 MCM Crimp Tube	Female Taper Nose Connector	
Contact: DA200998-3			Contact: DA200027-16	
Sleeve	Complete	Color	Complete	Sleeve
DA200039-7	E1023-112	Black	E1023-62	DA200040-7
DA200039-37	E1023-137	Blue	E1023-87	DA200040-40
DA200039-33	E1023-132	Brown	E1023-82	DA200040-38
DA200039-11	E1023-116	Green	E1023-66	DA200040-11
DA200039-10	E1023-115	Orange	E1023-65	DA200040-10
DA200039-9	E1023-114	Red	E1023-64	DA200040-9
DA200039-12	E1023-117	White	E1023-67	DA200040-12
DA200039-8	E1023-113	Yellow	E1023-63	DA200040-8

Male Taper Nose Connector		350 MCM Crimp Tube	Female Taper Nose Connector	
Contact: DA200998-1			Contact: DA200027-14	
Sleeve	Complete	Color	Complete	Sleeve
DA200039-1	E1023-100	Black	E1023-50	DA200040-1
DA200039-36	E1023-135	Blue	E1023-85	DA200040-39
DA200039-32	E1023-130	Brown	E1023-80	DA200040-37
DA200039-5	E1023-104	Green	E1023-54	DA200040-5
DA200039-4	E1023-103	Orange	E1023-53	DA200040-4
DA200039-3	E1023-102	Red	E1023-52	DA200040-3
DA200039-6	E1023-105	White	E1023-55	DA200040-6
DA200039-2	E1023-101	Yellow	E1023-51	DA200040-2

Male Taper Nose Connector		500 MCM Crimp Tube	Female Taper Nose Connector	
Contact: DA200998-2			Contact: DA200027-15	
Sleeve	Complete	Color	Complete	Sleeve
DA200039-1	E1023-106	Black	E1023-56	DA200040-1
DA200039-36	E1023-136	Blue	E1023-86	DA200040-39
DA200039-32	E1023-131	Brown	E1023-81	DA200040-37
DA200039-5	E1023-110	Green	E1023-60	DA200040-5
DA200039-4	E1023-109	Orange	E1023-59	DA200040-4
DA200039-3	E1023-108	Red	E1023-58	DA200040-3
DA200039-6	E1023-111	White	E1023-61	DA200040-6
DA200039-2	E1023-107	Yellow	E1023-57	DA200040-2

Single Pole J Series Pre-Assembled to Cable

Duraline Single Pole J Series Connectors are also available Factory Assembled directly to cable of various sizes and lengths. Each assembly is completely customizable to fit any need and can be attached in a number of ways; from vulcanization, to heat shrink, and also directly molded to cable. Any of these options can help ensure a long lasting water proof bond to the cable.





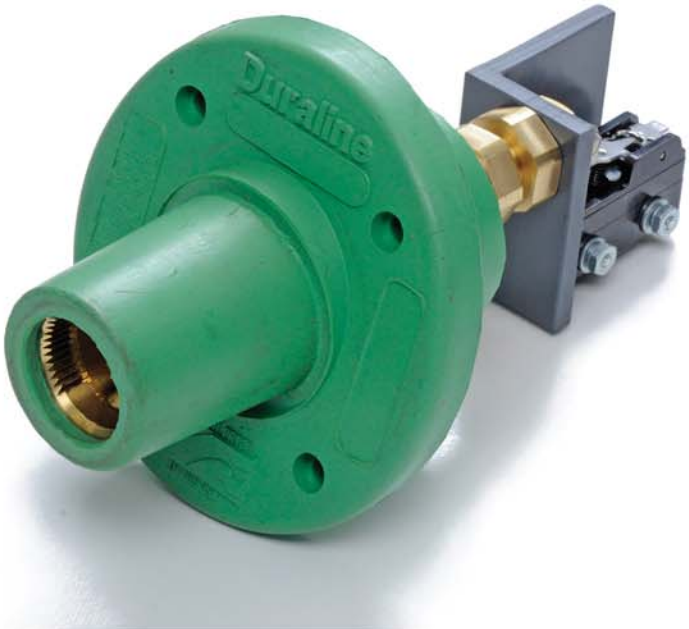
Single Pole J Series
Panel Mount Receptacles



30° Receptacle		
Male	Color	Female
DE1023-1601	Black	DE1023-1626
DE1023-1613	Blue	DE1023-1640
DE1023-1615	Brown	DE1023-1638
DE1023-1609	Green	DE1023-1634
DE1023-1607	Orange	DE1023-1632
DE1023-1605	Red	DE1023-1630
DE1023-1611	White	DE1023-1636
DE1023-1603	Yellow	DE1023-1628

90° Receptacle		
Male	Color	Female
DE1023-1600	Black	DE1023-1625
DE1023-1612	Blue	DE1023-1639
DE1023-1614	Brown	DE1023-1637
DE1023-1608	Green	DE1023-1633
DE1023-1606	Orange	DE1023-1631
DE1023-1604	Red	DE1023-1629
DE1023-1610	White	DE1023-1635
DE1023-1602	Yellow	DE1023-1627

Single Pole J Series 15°
Receptacle with Microswitch

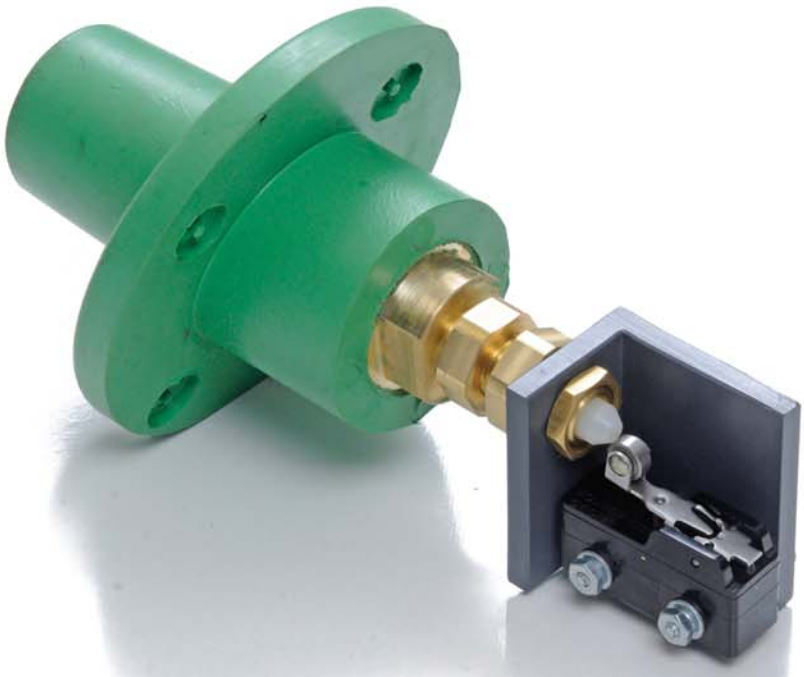


15° Receptacle With Switch	
Color	Female
Black	DE1023-1641
Blue	DE1023-1647
Brown	DE1023-1646
Green	DE1023-1648
Orange	DE1023-1645
Red	DE1023-1643
White	DE1023-1642
Yellow	DE1023-1644

Duraline Single Pole J Series Receptacles are available in three configurations, 15° with microswitch, 30°, and 90°. All receptacles can be panel or box mounted, and have an integrally molded mounting support ring for rugged applications.

The Duraline 15° Receptacle With Microswitch can either be configured as normally open or closed. Meeting all military and safety specifications, this option allows for an extra degree of safety when in use. The microswitch system can be configured so that no power is engaged unless all applicable connections are made. One of the main functions for this system is to prevent more than one source of power from engaging at a time, such as in the case of emergency generators.

All Single Pole J Series Receptacles are rated up to 690 amps and 750 volts and are designed to meet or exceed military and OSHA specifications, and are listed to UL and CSA/CUL.





**With over 70 years experience,
we know exactly what you need.**



Duraline was founded in 1946 as a supplier of safety-engineered electrical distribution systems for the shipbuilding industries. We have since grown to supply diverse industries such as petrochemical, aviation, medical, and entertainment.



Duraline products are proudly made in the U.S.A. All of the manufacturing is done in our Florida facility, established in 2012. To guarantee that our products are safe, we follow the most stringent manufacturing and quality control requirements and manufacture our products to conform with several recognized industry standards.



Duraline is committed to bringing the best product possible to our customers, including developing new products to match any needs our customers might have.

Duraline®

Industrial Strength Electrical Products for Industrial Strength Users



Duraline Div. of J.B. Nottingham & Co., Inc.
1731 Patterson Ave.
DeLand, FL 32724

Phone: 386-873-2990 | Fax: 386-873-2995

www.jbn-duraline.com

