

Duraline®



WIDE AREA LED LIGHTING STRINGERS



Industrial Strength Electrical Products for Industrial Strength Users





Wide Area LED Lighting Stringers

Duraline **Wide Area LED Lighting Blocks and Streamers** provide safe, effective overhead lighting for any number of purposes and locations. Blocks are typically spaced at either 15' or 20' intervals, and come with molded NEMA 5-15 plugs for easy use, but other connectors are available. Each Lighting Block can be equipped with either an epoxy coated magnet or an attachable grommet assembly, ideal for hanging and using as temporary lighting. Each fixture weighs approximately 8 lbs and produces up to 5,000 Lumen on only 36 watts, and all blocks are NEMA 4 rated and have 277/120V input. It is also equipped with a Lexan lens for ultimate durability.

These Lighting Blocks can also be molded to any specified interval and length. They are molded in solid, UV stabilized, and flame-retardant rubber. Our molding process ensures no air gaps or voids, and that every part is integrally molded directly to cable. These assemblies are available in either a 90° or 15° configuration.



Popular Wide Area LED Lighting Options

90° Magnet Mount	Length	No. of Blocks	Spacing	Cable Size	Total Lumen	Lead and Tail
M194100-014B-012-BLK	12'	1	N/A	14/3	4,300	6' / 6'
M194101-014B-060-BLK	60'	3	20'	14/3	12,900	10' / 10'
M194101-014B-100-BLK	100'	5	20'	14/3	21,500	10' / 10'
M194102-014B-105-BLK	105'	7	15'	14/3	30,100	7.5' / 7.5'
M194103-014B-010-BLK	10'	1	N/A	14/3	4,300	10' / N/A

90° Hanging Streamer	Length	No. of Blocks	Spacing	Cable Size	Total Lumen	Lead and Tail
M194201-014B-060-BLK	60'	3	20'	14/3	12,900	10' / 10'
M194201-014B-100-BLK	100'	5	20'	14/3	21,500	10' / 10'
M194202-014B-105-BLK	105'	7	15'	14/3	30,100	7.5' / 7.5'

15° Hanging Streamer	Length	No. of Blocks	Spacing	Cable Size	Total Lumen	Lead and Tail
M194300-014B-012-BLK	12'	1	N/A	14/3	4,300	6' / 6'
M194301-014B-060-BLK	60'	3	20'	14/3	12,900	10' / 10'
M194301-014B-100-BLK	100'	5	20'	14/3	21,500	10' / 10'
M194302-014B-105-BLK	105'	7	15'	14/3	30,100	7.5' / 7.5'
M194303-014B-010-BLK	10'	1	N/A	14/3	4,300	10' / N/A

****Other Configurations are Available****

Key Features of Wide Area LED Flood Lighting Blocks:

- Over 4,000 Lumen per block, and extremely energy efficient at 30 watts per block.
- Shock, vibration, and impact resistant that includes a Lexan polycarbonate lens.
- No square or sharp edges on lens or molded block.
- Easy and cost effective repair/replacement of lens and driver/LED assembly.
- All assemblies include NEMA 5-15 connectors molded directly to the cable.
- Each block only weighs 8 pounds when completely assembled.
- Outdoor-rated assemblies are perfect for any location.
- Safety grommet allows block to be chained in place for extra safety and protection
- Custom spacing, lengths, and connectors can be ordered to fit any need.



Replacement Parts

Part Number	Description
A007872	Lexan Lens Diffuser
A007892	2x Magnetic Mount, Black Epoxy Coated
A294051	2x Hanging Grommets
A294055	Driver & LED Assembly
A007910	2x O-Clamps for Pipe-Mounting

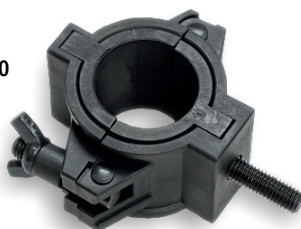
A007872



A007892



A007910



A294051



A294055



Industrial Strength Electrical Products for Industrial Strength Users



Duraline Div. of J.B. Nottingham & Co., Inc.
 1731 Patterson Ave.
 DeLand, FL 32724
Phone: 386-873-2990
www.jbn-duraline.com

