

Duraline®



E1017 / 17 Series J-Type Connectors



Industrial Strength Electrical Products for Industrial Strength Users



Duraline®

Single Pole J Series Connectors

Duraline has been manufacturing **Single Pole J Series Cam-Type Connectors** since 1946. These connectors are designed for quick and safe positive power connections. High conductivity with low resistance is assured through connectors that lock tight and stay tight! When mated, our connectors are impervious to vibration and will not twist loose from cable flexing. Connectors are available in a variety of colors to allow for easy phase identification. These connectors were designed and are built to meet and exceed all U.S. Naval specifications.

All connectors and receptacles are rated 690a continuous, 1150a intermittent, and 600 volts AC/DC, have a NEMA 4 rating, and are listed to UL and CUL/CSA.



Male Ball Nose Connector		350 MCM Crimp Tube	Female Ball Nose Connector	
Contact: DA200028-1			Contact: DA200027-5	
Sleeve	Complete	Color	Complete	Sleeve
DA200056-1	E1017-1	Black	E1017-50	DA200040-1-17
DA200056-37	E1017-26	Blue	E1017-74	DA200040-39-17
DA200056-42	E1017-31	Brown	E1017-79	DA200040-37-17
DA200056-4	E1017-4	Orange	E1017-53	DA200040-4-17
DA200056-3	E1017-3	Red	E1017-52	DA200040-3-17
DA200056-6	E1017-6	White	E1017-55	DA200040-6-17
DA200056-2	E1017-2	Yellow	E1017-51	DA200040-2-17

Male Ball Nose Connector		500 MCM Crimp Tube	Female Ball Nose Connector	
Contact: DA200028-2			Contact: DA200027-6	
Sleeve	Complete	Color	Complete	Sleeve
DA200056-1	E1017-7	Black	E1017-56	DA200040-1-17
DA200056-37	E1017-27	Blue	E1017-75	DA200040-39-17
DA200056-42	E1017-32	Brown	E1017-80	DA200040-37-17
DA200056-4	E1017-10	Orange	E1017-59	DA200040-4-17
DA200056-3	E1017-9	Red	E1017-58	DA200040-3-17
DA200056-6	E1017-12	White	E1017-61	DA200040-6-17
DA200056-2	E1017-8	Yellow	E1017-57	DA200040-2-17

Male Ball Nose Connector Contact: DA200028-3		750 MCM Crimp Tube	Female Ball Nose Connector Contact: DA200027-7	
Sleeve	Complete		Complete	Sleeve
DA200056-7	E1017-13	Black	E1017-62	DA200040-7
DA200056-40	E1017-28	Blue	E1017-76	DA200040-40
DA200056-38	E1017-33	Brown	E1017-81	DA200040-38
DA200056-10	E1017-16	Orange	E1017-65	DA200040-10
DA200056-9	E1017-15	Red	E1017-64	DA200040-9
DA200056-12	E1017-18	White	E1017-67	DA200040-12
DA200056-8	E1017-14	Yellow	E1017-63	DA200040-8





Single Pole J Series Pre-Assembled to Cable



Duraline Single Pole J Series Connectors are also available Factory Assembled directly to cable of various sizes and lengths. Each assembly is completely customizable to fit any need and can be attached in a number of ways; from vulcanization, to heat shrink, and also directly molded to cable. Any of these options can help ensure a long lasting water proof bond to the cable.

Single Pole J Series Panel Mount Receptacles

Duraline's E1017 Male and Female Cam Type Receptacles are engineered for secure, vibration-resistant connections that remain dependable in demanding environments while allowing fast, tool-free disconnects when needed. Available in both 30° and 90° configurations, these connectors feature splash-tight, color-coded insulating sleeves and are built to meet NEMA 4 requirements as well as stringent U.S. Navy specifications.

Fully compatible with other E1017 Cam-Lok connectors.



90° Receptacle

Male	Color	Female
DE1017-1600	Black	DE1017-1625
DE1017-1612	Blue	DE1017-1637
DE1017-1614	Brown	DE1017-1641
DE1017-1606	Orange	DE1017-1631
DE1017-1604	Red	DE1017-1629
DE1017-1610	White	DE1017-1635
DE1017-1602	Yellow	DE1017-1627

30° Receptacle

Male	Color	Female
DE1017-1601	Black	DE1017-1626
DE1017-1613	Blue	DE1017-1638
DE1017-1615	Brown	DE1017-1642
DE1017-1607	Orange	DE1017-1632
DE1017-1605	Red	DE1017-1630
DE1017-1611	White	DE1017-1636
DE1017-1603	Yellow	DE1017-1628

Single Pole J Series Connectors and Caps

Duraline Single Pole J Series Connectors and Caps are designed so that, when mated, they protect the contact and sleeve. These connectors and caps serve a wide variety of fields, and are made to endure some of the harshest conditions. The sleeves and caps are made from molded solid rubber to ensure a long lasting component.



Caps		
Male	Color	Female
A244701	Black	A244629
A244725	Blue	A265927
A244733	Brown	A244635
A244734	Orange	A244632
A244723	Red	A244631
A244724	White	A244634
A244735	Yellow	A244630



Mated caps not only protect contact, but also protect from electrical shock. Caps fit all 1017 & 1023 products

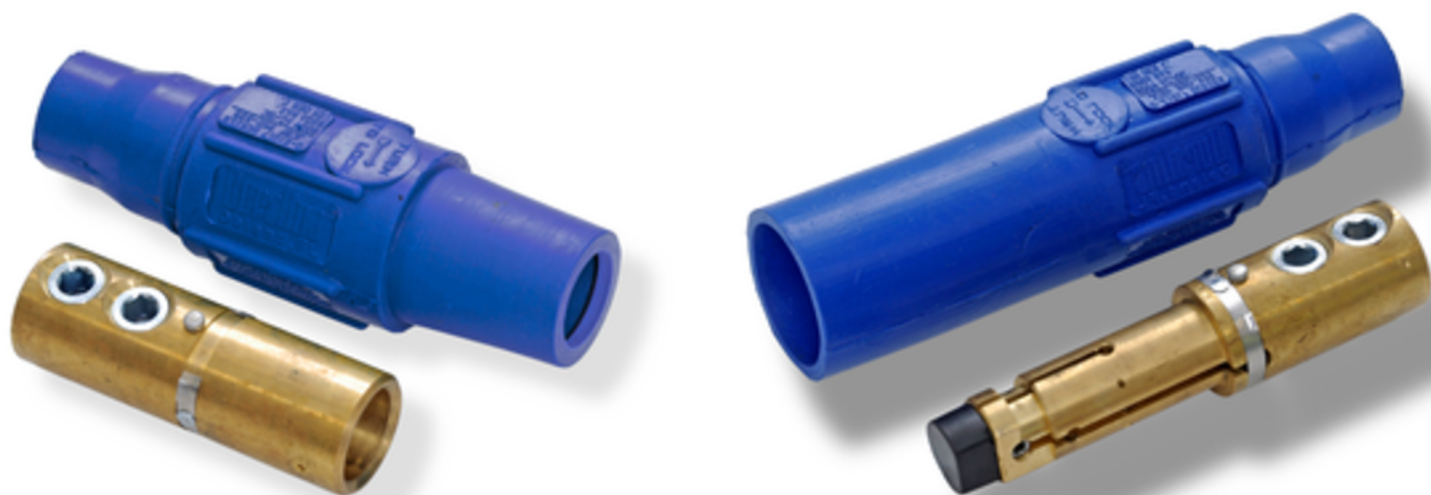


Duraline® Single Pole J Series Double Set Screw Connectors

Duraline has been manufacturing Single Pole J Series Cam-Type Connectors since 1946. These connectors are designed for quick and safe positive power connections. High conductivity with low resistance is assured through connectors that lock tight and stay tight! When mated, our connectors are impervious to vibration and will not twist loose from cable flexing. Connectors are available in a variety of colors to allow for easy phase identification. These connectors were designed and are built to meet and exceed all U.S. Naval specifications. All connectors and receptacles are rated 690a continuous, 1150a intermittent, and 600 volts AC/DC, have a NEMA 4 rating, and are listed to UL and CUL.

Duraline Single Pole J Series Double Set Screw Connectors are quickly and easily connected and disconnected without tools and were designed for easy field assembly. Our connectors are used in many shipyards, both military and civilian, outdoor events, fairs and carnivals, and many other locations where single pole, high voltage power is desired.

Double Set Screw		
Male	Color	Female
E1017-350	Black	E1017-375
E1017-356	Blue	E1017-381
E1017-357	Brown	E1017-382
E1017-353	Orange	E1017-378
E1017-352	Red	E1017-377
E1017-355	White	E1017-380
E1017-351	Yellow	E1017-376





With over 70 years experience, we know exactly what you need.



Duraline was founded in 1946 as a supplier of safety-engineered electrical distribution systems for the shipbuilding industries. We have since grown to supply diverse industries such as petrochemical, aviation, medical, and entertainment.



Duraline products are proudly made in the U.S.A. All of the manufacturing is done in our Florida facility, established in 2012. To guarantee that our products are safe, we follow the most stringent manufacturing and quality control requirements and manufacture our products to conform with several recognized industry standards.



Duraline is committed to bringing the best product possible to our customers, including developing new products to match any needs our customers might have.

Duraline®

Industrial Strength Electrical Products for Industrial Strength Users



Duraline Div. of J.B. Nottingham & Co., Inc.
1731 Patterson Ave.
DeLand, FL 32724
Phone: 386-873-2990 | Fax: 386-873-2995
www.jbn-duraline.com

