

Duraline®



E1023 / 23 Series J-Type Connectors



Industrial Strength Electrical Products for Industrial Strength Users



Duraline®

Single Pole J Series Connectors

Duraline has been manufacturing **Single Pole J Series Cam-Type Connectors** since 1946. These connectors are designed for quick and safe power connections with insulated push-button release. High conductivity with low resistance is assured through connectors that lock tight and stay tight! When mated, our connectors are impervious to vibration and will not twist loose from cable flexing. Connectors are available in a variety of colors to allow for easy phase identification. These connectors were designed and are built to meet and exceed all U.S. Naval specifications.

All connectors and receptacles are rated 690a continuous, 1150a intermittent, and 600 volts AC/DC, have a NEMA 4 rating, and are listed to UL and CUL/CSA.



Male Taper Nose Connector		350 MCM Crimp Tube	Female Taper Nose Connector	
Contact: DA200998-1			Contact: DA200027-16	
Sleeve	Complete	Color	Complete	Sleeve
DA200039-1	E1023-106	Black	E1023-56	DA200040-1
DA200039-36	E1023-136	Blue	E1023-86	DA200040-39
DA200039-32	E1023-131	Brown	E1023-81	DA200040-37
DA200039-4	E1023-109	Orange	E1023-59	DA200040-4
DA200039-3	E1023-108	Red	E1023-58	DA200040-3
DA200039-6	E1023-111	White	E1023-61	DA200040-6
DA200039-2	E1023-107	Yellow	E1023-57	DA200040-2

Male Taper Nose Connector		500 MCM Crimp Tube	Female Taper Nose Connector	
Contact: DA200998-2			Contact: DA200027-16	
Sleeve	Complete	Color	Complete	Sleeve
DA200039-1	E1023-106	Black	E1023-56	DA200040-1
DA200039-36	E1023-136	Blue	E1023-86	DA200040-39
DA200039-32	E1023-131	Brown	E1023-81	DA200040-37
DA200039-4	E1023-109	Orange	E1023-59	DA200040-4
DA200039-3	E1023-108	Red	E1023-58	DA200040-3
DA200039-6	E1023-111	White	E1023-61	DA200040-6
DA200039-2	E1023-107	Yellow	E1023-57	DA200040-2



Male Taper Nose Connector Contact: DA200998-3		750 MCM Crimp Tube	Female Taper Nose Connector Contact: DA200027-16	
Sleeve	Complete		Complete	Sleeve
DA200039-7	E1023-112	Black	E1023-62	DA200040-7
DA200039-37	E1023-137	Blue	E1023-87	DA200040-40
DA200039-33	E1023-132	Brown	E1023-82	DA200040-38
DA200039-10	E1023-115	Orange	E1023-65	DA200040-10
DA200039-9	E1023-114	Red	E1023-64	DA200040-9
DA200039-12	E1023-117	White	E1023-67	DA200040-12
DA200039-8	E1023-113	Yellow	E1023-63	DA200040-8

Single Pole J Series Pre-Assembled to Cable

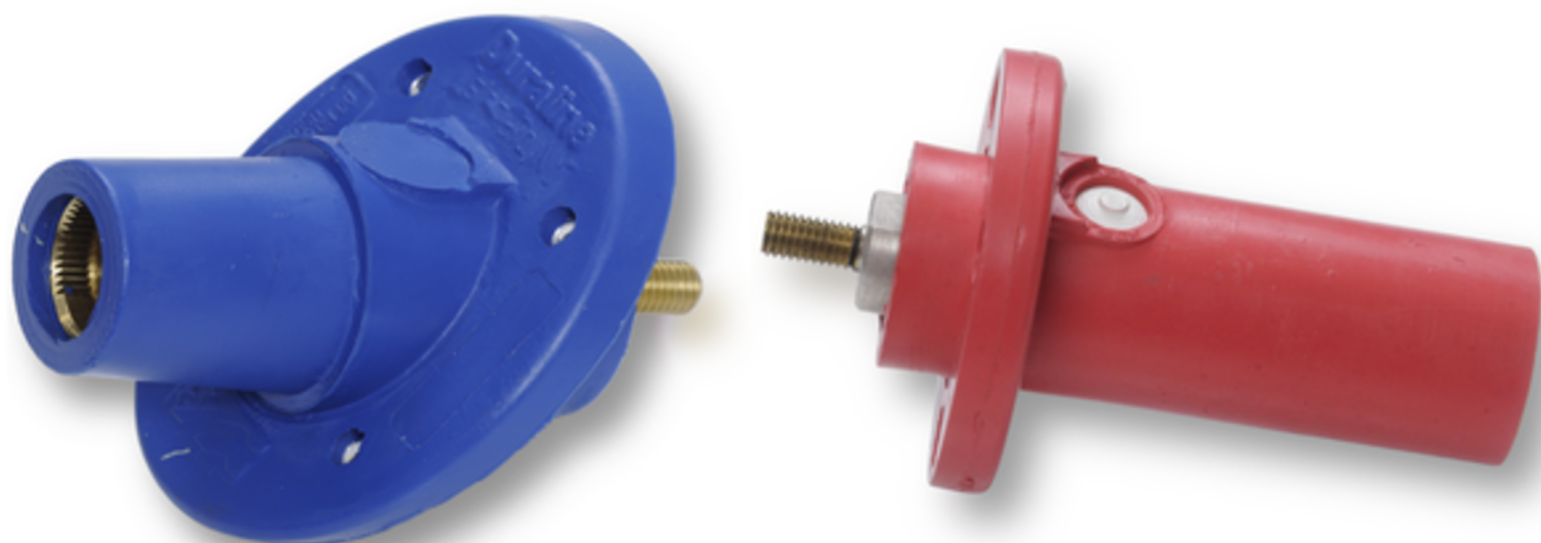
Duraline Single Pole J Series Connectors are also available Factory Assembled directly to cable of various sizes and lengths. Each assembly is completely customizable to fit any need and can be attached in a number of ways; from vulcanization, to heat shrink, and also directly assembled to cable. Any of these options can help ensure a long lasting water proof bond to the cable.



Single Pole J-Series Panel Mount Receptacles

Duraline's E1023 Male and Female Cam Type Receptacles' positive latching design ensures secure, vibration-resistant connections that won't loosen under heavy use, while the insulated push-button release allows fast, tool-free disconnects. Available in 30° and 90° configurations with water-tight, color-coded insulating sleeves, and a rugged molded support ring for panel or box mounting. These connectors meet NEMA 4 standards and stringent Navy specifications.

Fully compatible with other 23 Series and E1023 Cam-Lok connectors.



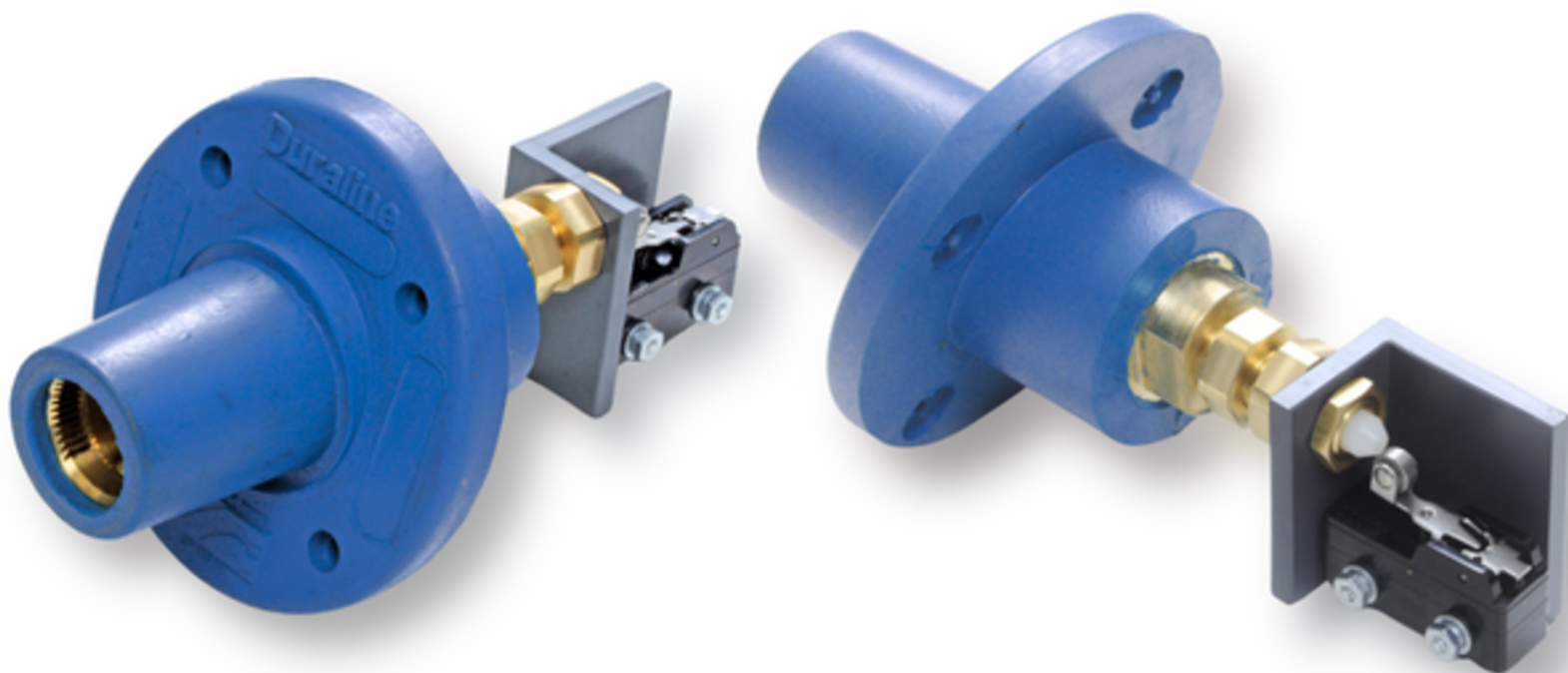
30° Receptacle

	Color	Female
DE1023-1601	Black	DE1023-1626
DE1023-1613	Blue	DE1023-1640
DE1023-1615	Brown	DE1023-1638
DE1023-1607	Orange	DE1023-1632
DE1023-1605	Red	DE1023-1630
DE1023-1611	White	DE1023-1636
DE1023-1603	Yellow	DE1023-1628

90° Receptacle

Male	Color	Female
DE1023-1600	Black	DE1023-1625
DE1023-1612	Blue	DE1023-1639
DE1023-1614	Brown	DE1023-1637
DE1023-1606	Orange	DE1023-1631
DE1023-1604	Red	DE1023-1629
DE1023-1610	White	DE1023-1635
DE1023-1602	Yellow	DE1023-1627

Single Pole J-Series 15° Receptacle with Microswitch



Duraline's 15° Single Pole J Series Receptacle with Microswitch is engineered for maximum safety and reliability in demanding power applications. Designed to meet military and OSHA specifications, this connector features a rugged molded support ring for panel or box mounting and is fully UL and CSA/CUL listed.

What sets the 15° Microswitch Receptacle apart is its built-in safety function: the microswitch ensures no power is engaged unless all connections are securely in place. This prevents accidental energization and eliminates the risk of multiple power sources engaging simultaneously—making it an essential choice for emergency generators, shipyards, and high-stakes industrial environments.

15° Receptacle With Micro Switch

Color	Female
Black	DE1023-1641
Blue	DE1023-1647
Brown	DE1023-1646
Orange	DE1023-1645
Red	DE1023-1643
White	DE1023-1642
Yellow	DE1023-1644

Single Pole J-Series Connectors and Caps

Duraline Single Pole J Series Connectors and Caps are designed so that, when mated, they protect the contact and sleeve. These connectors and caps serve a wide variety of fields, and are made to endure some of the harshest conditions. The sleeves and caps are designed to ensure a long lasting, durable component.



Caps		
Male	Color	Female
A244701	Black	A244629
A244725	Blue	A244636
A244733	Brown	A244635
A244734	Orange	A244632
A244723	Red	A244631
A244724	White	A244634
A244735	Yellow	A244630



Mated caps not only protect the contact from the elements, but also protect from electrical shock. Caps fit all E1023 products



Duraline®

Single Pole J Series Field Attachable Connectors

Duraline's E1023 Field-Attachable Connectors are engineered for industries where reliability and adaptability are non-negotiable. Built with a rugged positive latching system, these connectors lock securely in place, resisting vibration and accidental disconnection in even the harshest environments. Their durable rubber housing ensures long-lasting performance, standing up to moisture, corrosion, and heavy use.

What sets the field-attachable E1023 apart is its design, giving technicians the ability to terminate and repair cables on-site. This flexibility reduces downtime, cuts costs, and ensures uninterrupted power delivery. UL/cUL listed and meeting Navy specifications, the E1023 delivers up to 690 amps continuous and 1150 amps intermittent at 600 volts AC/DC.

Perfect for shipyards, power plants, construction sites, and emergency power systems, the E1023 Series provides a safe, efficient, and serviceable solution for demanding high-power applications.

Double Set Screw		
Male	Color	Female
DE1023-106-DS1-FA	Black	DE1023-56-DS1-FA
DE1023-136-DS1-FA	Blue	DE1023-86-DS1-FA
DE1023-131-DS1-FA	Brown	DE1023-81-DS1-FA
DE1023-109-DS1-FA	Orange	DE1023-59-DS1-FA
DE1023-108-DS1-FA	Red	DE1023-58-DS1-FA
DE1023-111-DS1-FA	White	DE1023-61-DS1-FA
DE1023-107-DS1-FA	Yellow	DE1023-57-DS1-FA

350 MCM Crimp Tube		
Male	Color	Female
DE1023-100-FA	Black	DE1023-50-FA
DE1023-135-FA	Blue	DE1023-85-FA
DE1023-130-FA	Brown	DE1023-80-FA
DE1023-103-FA	Orange	DE1023-53-FA
DE1023-102-FA	Red	DE1023-52-FA
DE1023-105-FA	White	DE1023-55-FA
DE1023-101-FA	Yellow	DE1023-51-FA

500 MCM Crimp Tube		
Male	Color	Female
DE1023-106-FA	Black	DE1023-56-FA
DE1023-136-FA	Blue	DE1023-86-FA
DE1023-131-FA	Brown	DE1023-81-FA
DE1023-109-FA	Orange	DE1023-59-FA
DE1023-108-FA	Red	DE1023-58-FA
DE1023-111-FA	White	DE1023-61-FA
DE1023-107-FA	Yellow	DE1023-57-FA





With over 70 years experience, we know exactly what you need.



Duraline was founded in 1946 as a supplier of safety-engineered electrical distribution systems for the shipbuilding industries. We have since grown to supply diverse industries such as petrochemical, aviation, medical, and entertainment.



Duraline products are proudly made in the U.S.A. All of the manufacturing is done in our Florida facility, established in 2012. To guarantee that our products are safe, we follow the most stringent manufacturing and quality control requirements and manufacture our products to conform with several recognized industry standards.



Duraline is committed to bringing the best product possible to our customers, including developing new products to match any needs our customers might have.

Duraline®

Industrial Strength Electrical Products for Industrial Strength Users



Duraline Div. of J.B. Nottingham & Co., Inc.
1731 Patterson Ave.
DeLand, FL 32724
Phone: 386-873-2990 | Fax: 386-873-2995
www.jbn-duraline.com

